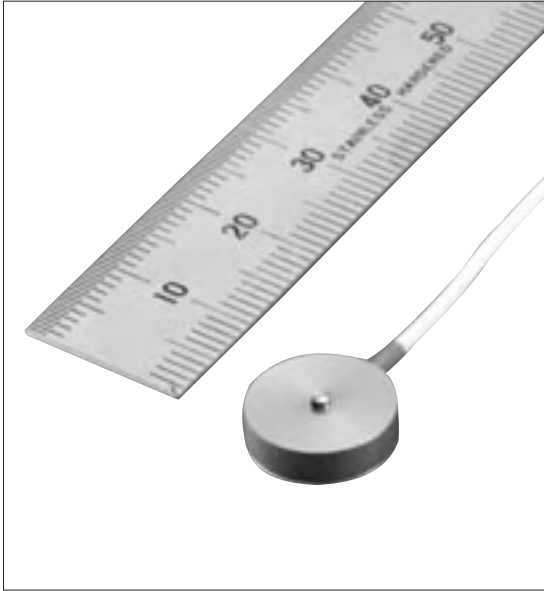


LOAD CELLS

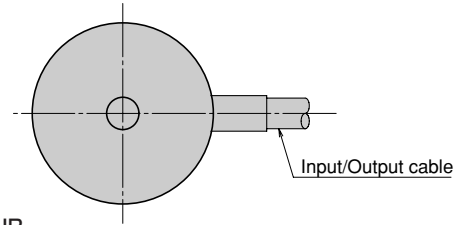
CLS-NA/CLS-NB Compression Load Cell

10N~10kN

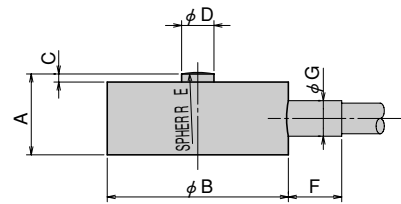


The CLS-NA and CLS-NB Load Cells are ultracompact load cells with capacities ranging from 10N to 10kN. They are widely used for measuring load distribution or loads in structural mockup testing and as a sensor for industrial machinery.

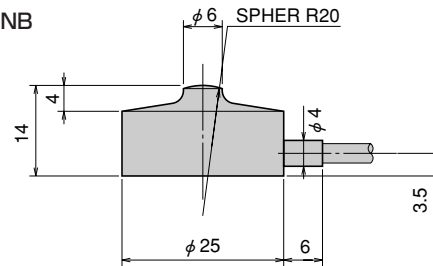
Protection ratings : IP 53 equivalent



CLS-10NA~5KNB



CLS-10KNB



Dimensions

Type	A	B	C	D	E	F	G	Weight (g)
CLS-10NA	4	12	0.7	1.5	2	4	1.8	3
CLS-20NA	4	12	0.7	1.5	2	4	1.8	3
CLS-50NA	4	12	0.7	1.5	2	4	1.8	3
CLS-100NA	4	12	0.7	1.5	2	4	1.8	3
CLS-200NB	9	20	1	2.5	8	6	4	12
CLS-500NB	9	20	1	2.5	8	6	4	12
CLS-1KNB	9	20	1	2.5	8	6	4	12
CLS-2KNB	10	20	1.5	3	8	6	4	12
CLS-5KNB	12.5	25	2	4	10	6	4	40
CLS-10KNB	As per the figure							40

Specifications

Type	CLS-10NA	CLS-20NA	CLS-50NA	CLS-100NA	CLS-200NB	CLS-500NB	CLS-1KNB	CLS-2KNB	CLS-5KNB	CLS-10KNB
Capacity	10N	20N	50N	100N	200N	500N	1kN	2kN	5kN	10kN
Rated Output	1mV/V (2000×10 ⁻⁶ strain) ±20%				1.5mV/V (3000×10 ⁻⁶ strain) ±10%					
Non-linearity	0.5%RO									
Hysteresis	0.5%RO									
Temperature effect on zero	0.1%RO/°C									
Temperature effect on span	0.05%/°C									
Compensated temperature range	-10~+60°C									
Temperature range	-10~+60°C									
Over load	150%									
Ultimate overload rating	500%				300%					
Input/output resistance	350Ω ±2%				350Ω ±1%					
Recommended exciting voltage	Less than 2V									
Allowable exciting voltage	5V									
Zero balance	150%RO				100%RO					

Input/Output cable : CLS-NA : φ 1.3mm 0.03mm² 4-core shielded vinyl cable 2m
 CLS-NB : φ 3mm 0.05mm² 4-core shielded chloroprene cable 2m